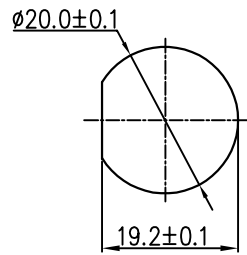
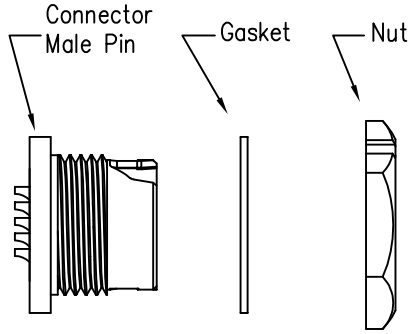
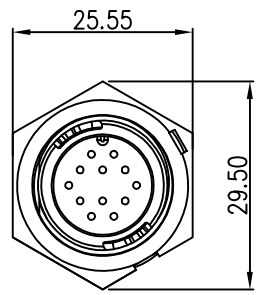
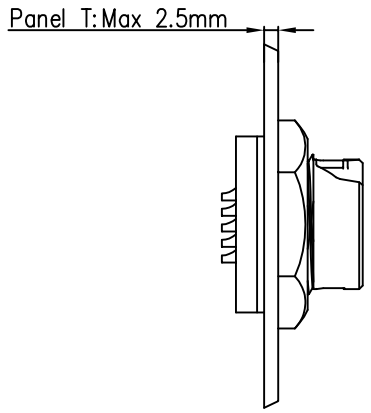
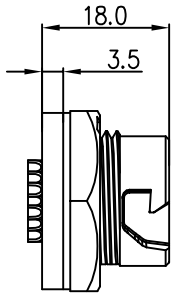


THIS INFORMATION IS CONFIDENTIAL AND IS DISCLOSED TO YOU ON CONDITION THAT NO FURTHER DISCLOSURE IS MADE BY YOU TO OTHER THAN CHOGORI PERSONNEL WITHOUT AUTHORIZATION FROM CHOGORI CORP.

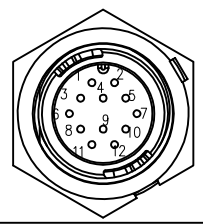
REV.	ECN NO.	DESCRIPTION	SIGN	DATE
C1	N/A	INITIAL DRAWING	Liu	2020/05/13



Recommended Panel Cut-Out



23XXX535-01  
Pin Number

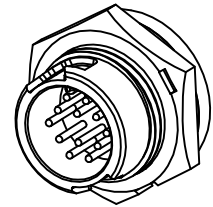


12 Pin

P/N: 23012535-01

Pin Assignments  
Front View

- Specification:
1. Operation Temperature:  $-45^{\circ}\text{C} \sim 105^{\circ}\text{C}$ .
  2. Insulation Resistance:  $100\text{M}\Omega$  at DC500V.
  3. Contact Resistance:  $<10\text{m}\Omega$ .
  4. Withstand Voltage: 1000V AC
  5. Operating Current: 5A
  6. Operating Voltage: DC 30V
  7. Waterproof Rate: IP67 (Mated)
  8. Housing: Nylon, Black
  9. Male Pin: Copper Alloy, Gold Plated
  10. Gasket: Silicon Gray
  11. Panel Nut: Nylon, Orange
  12. Torque Rate:  $0.8 \sim 1.0\text{N} \cdot \text{m}$
  13. RoHS Compliant.
  14. Mating Cap P/N: 806-00047-00



UNIT: mm 	DESCRIPTION Middle Series Push Lock Front Mount With Male Pin			PART NO	23012535-01	DRAWN BY	Liu	DATE	2020/05/17
	SCALE: 1:1      SHEET 1 OF 1			DWG NO		CHECKED BY	Mo	DATE	2020/05/17
	REV.	C1		SIZE	A4	CUSTOMER		APPROVED BY	Adley