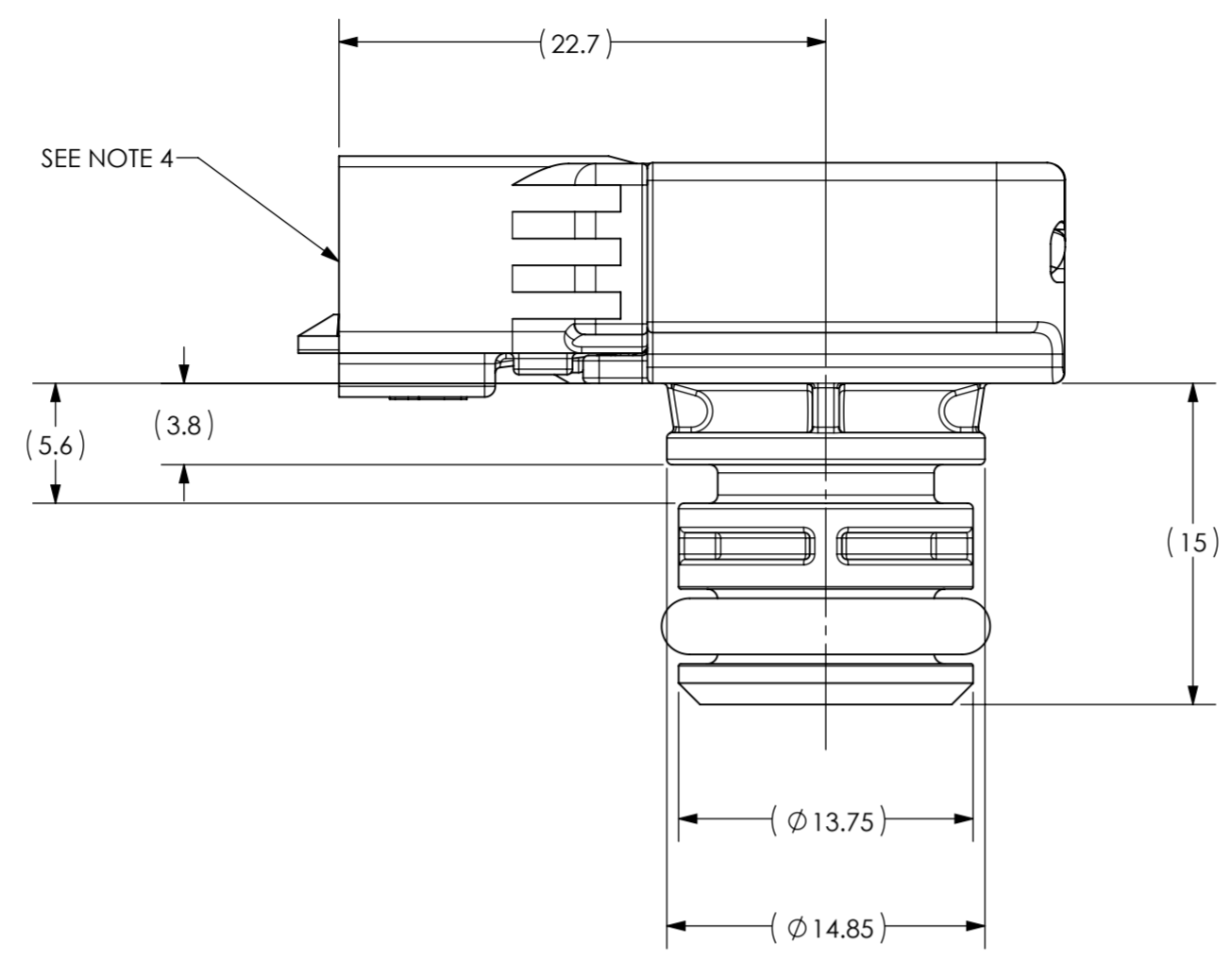
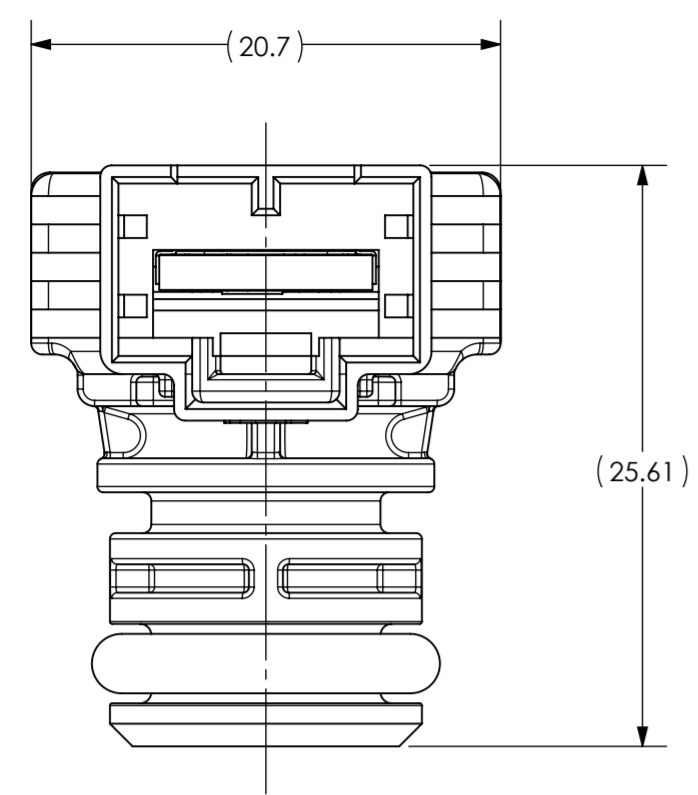
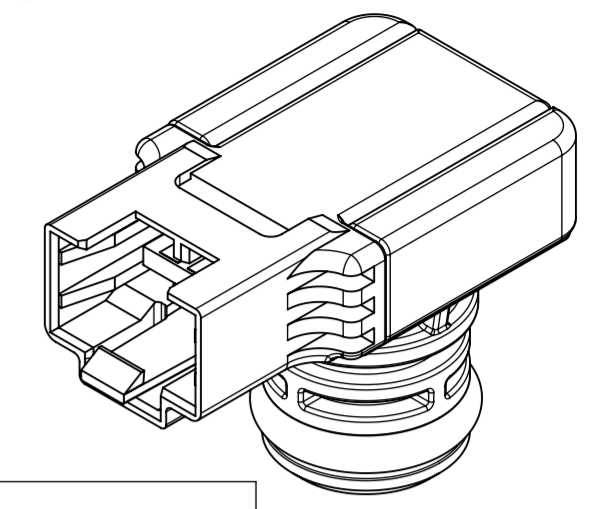


ZONE	REV.	REVISION DESCRIPTION	ECN NO.	DATE
	C	IN ENVIRONMENT TABLE, "OPERATING MEDIA TEMPERATURE RANGE" WAS "OPERATING TEMPERATURE"; IN ENVIRONMENT TABLE, ADDED ROW FOR "OPERATING AMBIENT TEMPERATURE RANGE"; JJ	ECO-271635	04-DEC-2018



ENVIRONMENT

OPERATING MEDIA TEMPERATURE RANGE	2 TO 90°C
OPERATING AMBIENT TEMPERATURE RANGE	2 TO 70°C
PRESSURE RANGE	0 TO 16 BARS (SEE NOTE 1)
HUMIDITY	0-95% (NON-CONDENSING)
ENCLOSURE PROTECTION	IP-40
STORAGE TEMPERATURE	-20 TO 115°C
PROOF PRESSURE	25 BARS
BURST PRESSURE	32 BARS

MATERIAL

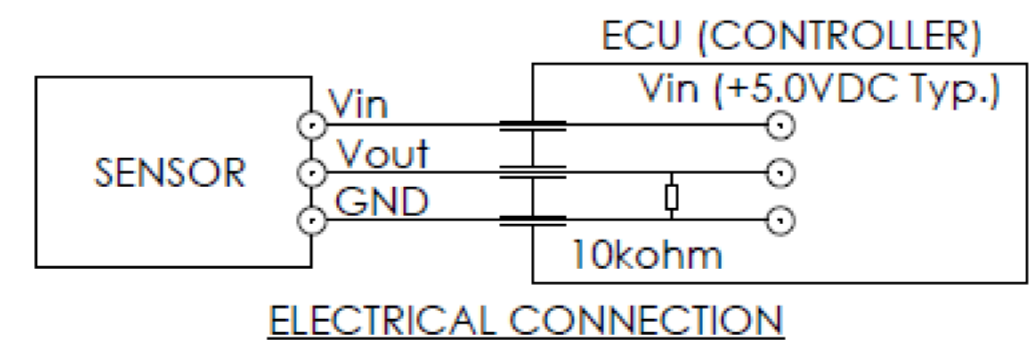
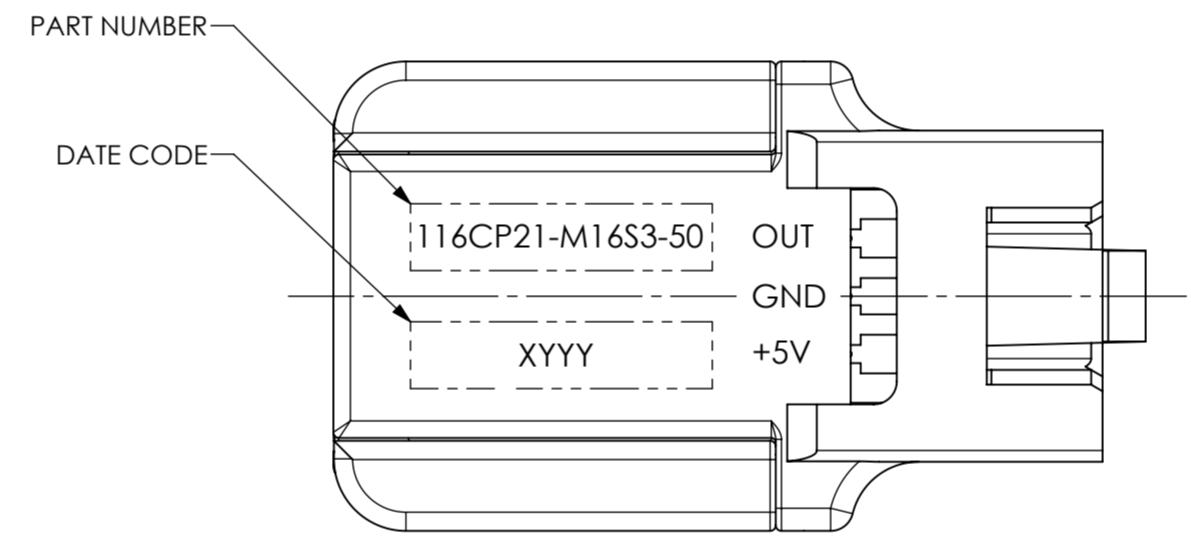
PACKAGE	FIBER REINFORCED PPA
SENSE ELEMENT	96% ALUMINA
PRESSURE SEAL	EPDM

PERFORMANCE

TOTAL ERROR BAND FROM 2 TO 90°C	±1.5 %FS (SEE NOTE 1)
---------------------------------	-----------------------

NOTES:

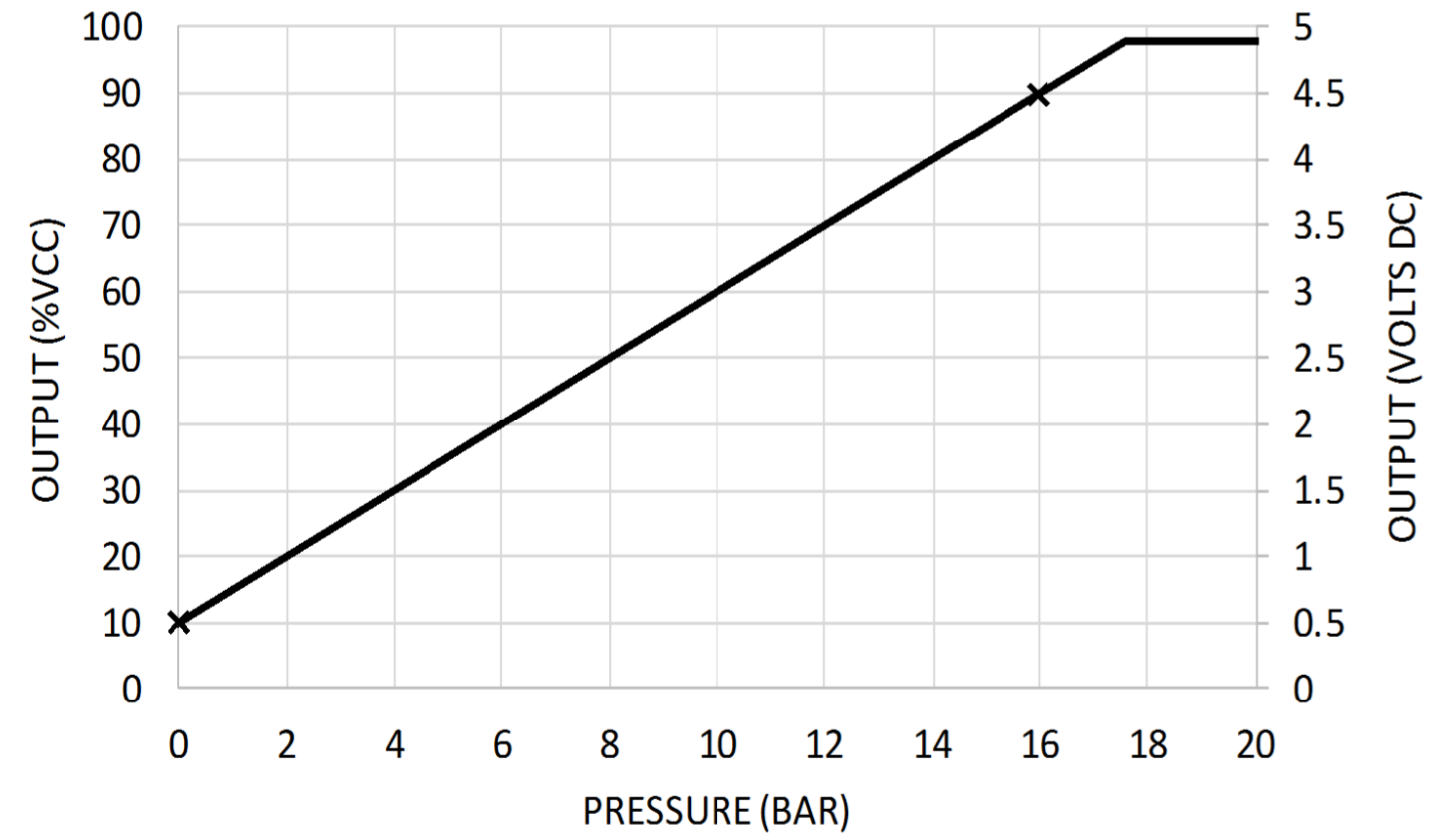
1. BARS DENOTES SEALED GAUGE. PRESSURE REFERENCE IS 14.7 PSIA (ATMOSPHERIC PRESSURE AT SEA LEVEL). 0 TO 16 BARS IS EQUIVALENT TO 14.7 TO 246.7 PSIA
2. FS (PRESSURE) = P_{MAX.} - P_{MIN.} = 16 BAR
FS (VOLTAGE) = V_{OUTMAX.} - V_{OUTMIN.} = 4 VDC
3. TOTAL ERROR BAND INCLUDES NONLINEARITY, HYSTERESIS AND REPEATABILITY.
4. DESIGNED TO RAST 2.5 REV 05 CONNECTOR SYSTEM.
5. DEVICE MEETS THE REQUIREMENTS OF DIRECTIVE 2011/65/EU FOR RoHS COMPLIANCE AND DIRECTIVE FOR 1907/2006 FOR REACH COMPLIANCE.



ELECTRICAL CONNECTIONS

POWER SUPPLY VOLTAGE	5.0 ±0.25 VDC
SUPPLY CURRENT	8.0 mA MAX.
OUTPUT LOAD	10K Ohm PULL DOWN
OUTPUT VOLTAGE RANGE	0.5 TO 4.5V TYPICAL

OUTPUT FUNCTION



TRANSFER FUNCTION

$\%VCC = 5.00 \times \text{PRESSURE (BARS)} + 10.00$
$\%VCC = (VOUT / VIN) \times 100$
$\text{PRESSURE (BARS)} = 20.00 \times (VOUT/VIN) - 2.00$
FOR REFERENCE ONLY (VIN = 5.0V), $\text{PRESSURE (BARS)} = 4.00 \times VOUT - 2.00$

FOR REFERENCE ONLY, CHECK LATEST REVISION BEFORE USE. PARTS MADE TO THIS PRINT MUST CONFORM TO E9898 REV. E.				529 PLEASANT STREET P.O. BOX 2964 ATTLEBORO, MA 02703	
DRAWN TB DATE 16-MAY-2017 ENGINEER M. LERMAN DATE 16-MAY-2017 APPROVED F. J. JAUREGUI DATE 16-MAY-2017 APPROVED B. DAGUE DATE 16-MAY-2017	SENSATA TECHNOLOGIES PROPRIETARY AND CONFIDENTIAL. NEITHER THIS PRINT NOR THE INFORMATION CONTAINED HEREON IS TO BE USED AGAINST THE INTERESTS OF SENSATA TECHNOLOGIES OR AGAINST THE INTERESTS OF ANY OF ITS AFFILIATED COMPANIES OR WHOLLY OWNED SUBSIDIARIES. INTERPRET DIMENSIONING AND TOLERANCING PER ASME Y14.5-2009. UNLESS OTHERWISE SPECIFIED DIMENSIONS ARE IN MILLIMETERS. TOLERANCES DECIMALS ANGLES		TITLE BOILER PRESSURE TRANSDUCER ENVELOPE DRAWING		REV.
DO NOT SCALE DRAWING THIRD ANGLE PROJECTION	SCALE 3:1 SOLIDWORKS	SHEET 1 OF 1	SIZE DWG NO. A2 116CP21-M16S3-50	REV. C	