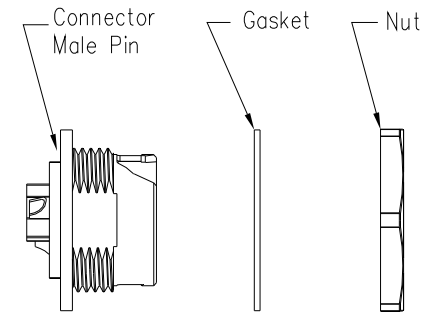
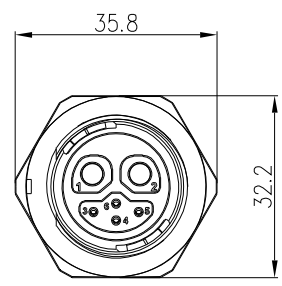
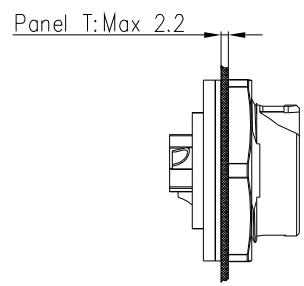
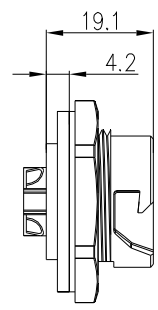
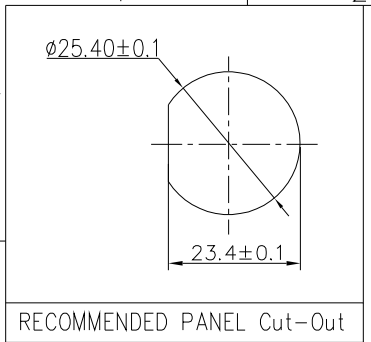


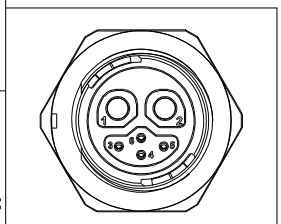
THIS INFORMATION IS CONFIDENTIAL AND IS DISCLOSED TO YOU ON CONDITION THAT NO FURTHER DISCLOSURE IS MADE BY YOU TO OTHER THAN CHOGORI PERSONNEL WITHOUT AUTHORIZATION FROM CHOGORI CORP.

REV.	ECN NO.	DESCRIPTION	SIGN	DATE
C1	N/A	INITIAL DRAWING	Liu	2020/05/18

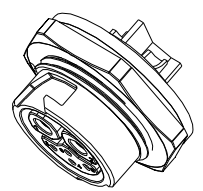


- Specification:
- 1.Operation Temperature:  $-45^{\circ}\text{C} \sim 105^{\circ}\text{C}$ .
  - 2.Insulation Resistance:  $100\text{M}\Omega$  at DC500V.
  - 3.Contact Resistance:  $<10\text{m}\Omega$ .
  - 4.Withstand Voltage: 2000V AC
  - 5.Operating Current: 50A+5A
  - 6.Operating Voltage: AC 300V
  - 7.Waterproof Rate: IP67 (Mated)
  - 8.Housing: Nylon, Black
  - 9.Male Pin: Copper Alloy, Gold Plated
  - 10.Female Pin: Copper Alloy, Gold Plated
  - 11.Gasket: Silicon Gray
  - 12.Panel Nut: Nylon, Bule
  - 13.Torque Rate:  $0.8 \sim 1.0\text{N} \cdot \text{m}$
  - 14.RoHS Compliant.
  - 15.Mating Cap P/N: 806-00058-00

22XXX635-01  
Pin Number



2+4 Pin  
P/N: 24204635-01  
Pin Assignments Front View



**CHOGORI**

UNIT:mm	DESCRIPTION	PART NO	DRAWN BY	DATE
TOLERANCE .X ±0.25 .XX ±0.15 .XXX ±0.05 ANGLES ±1°	Large Series Push Lock Female socket With Female Pin	24XXX635-01	Liu	2020/05/18
SCALE: 1:1	SHEET 1 OF 1	DWG NO	CHECKED BY	DATE
REV. C1	SIZE A4		Mo	2020/05/18
	* : Inspection Item	CUSTOMER	APPROVED BY	DATE
			Adley	2020/05/18